



The better  
green building  
board



**PalmEco<sup>TM</sup> Fire**

Greater fire resistance

# PalmEco™ Fire board is designed for protection

PalmEco™ Fire board is made from a special fire-rated minerals bond matrix reinforced with glass and palm fibres. It contains no asbestos and is free from formaldehyde. PalmEco™ Fire board is a strong and non-combustible building board with up to 120 minutes fire rating performance in accordance with BS-EN 1364-1:1999, and is intended for use in both internal and external environments.

PalmEco™ Fire board meets the demand for building boards offering advanced fire protection. PalmEco™ Fire is eco-friendly and its complementing strengths – strong water and insect resistance, non-toxic emission, high acoustic performance, makes it an ideal choice of building board to meeting the most stringent regulations. It's cost-effective, durable and safe.

PalmEco™ Fire is suitable for external use and can withstand high impact and abrasion.

The board is simple to work with and it is easy to fix and decorate. It will not rot or decay even in difficult conditions.



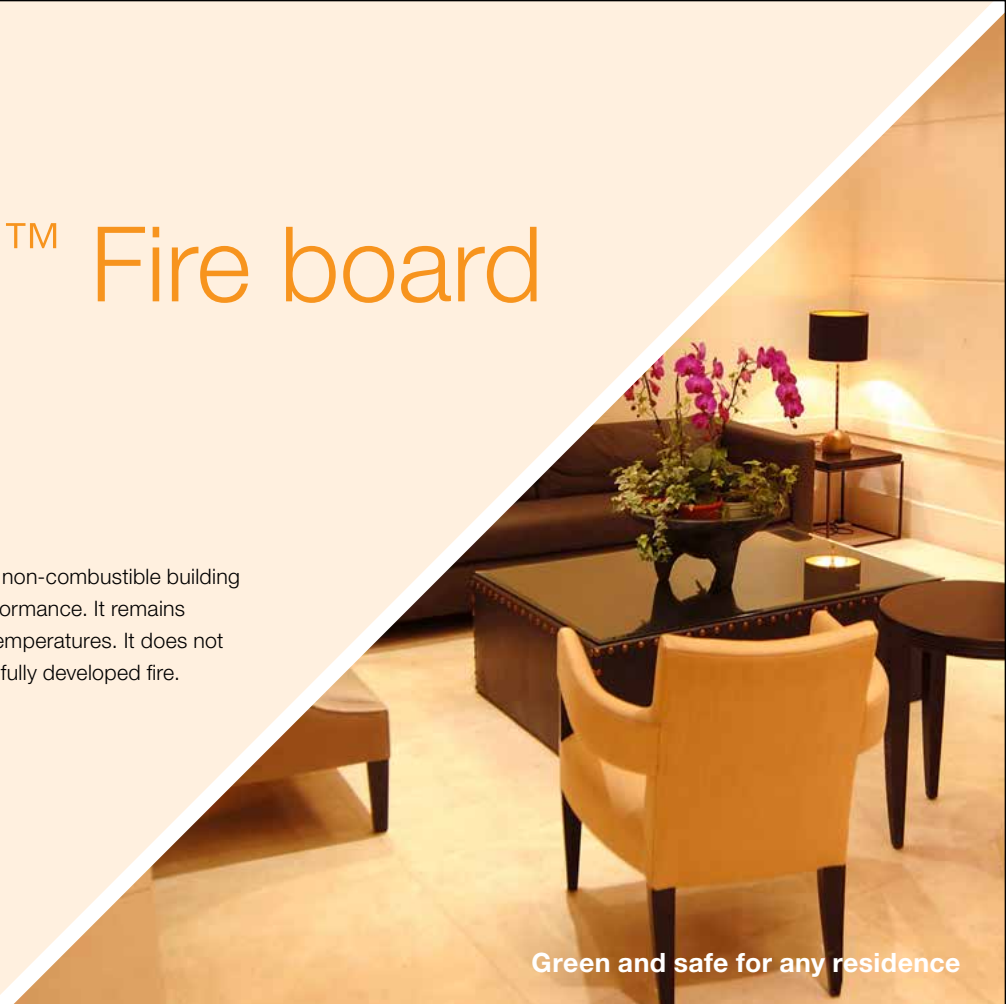
Ideal for all commercial applications

**Class A1**  
strong fire protection  
performance

# PalmEco™ Fire board

## key facts

PalmEco™ Fire board is a versatile strong non-combustible building board with top of class fire resistance performance. It remains strong, crack free and stable under high temperatures. It does not burn or emit toxic gas when exposed to a fully developed fire.

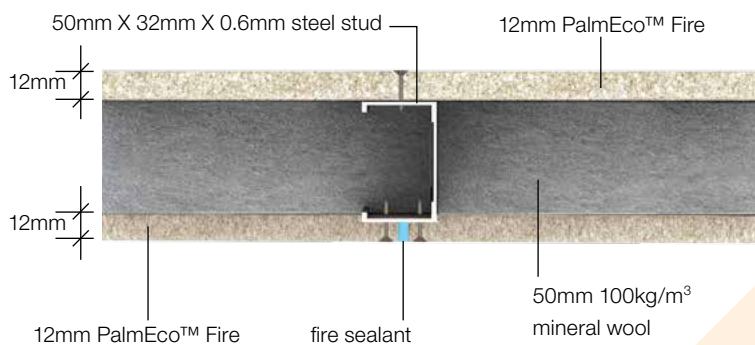
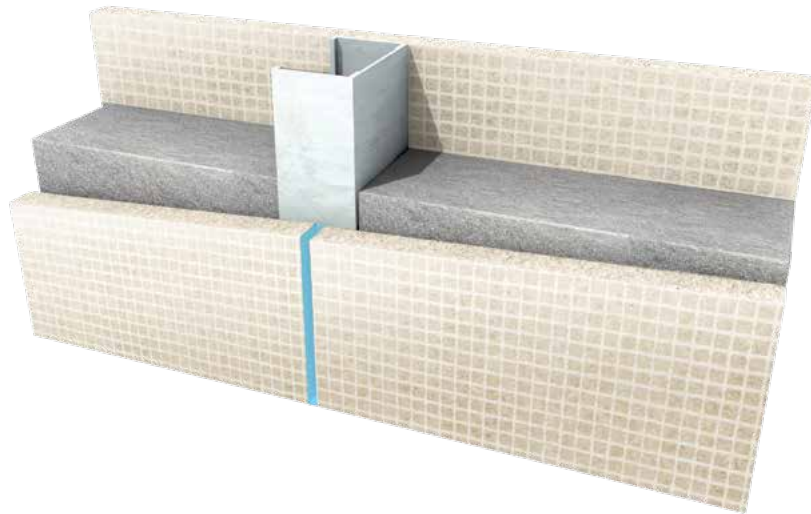


Green and safe for any residence

Board type	PalmEco™ Fire
Thickness	12mm
Size	2440mm x 1220mm
Normal dry density (average)	1100 kg/m <sup>3</sup>
Combustibility	<ul style="list-style-type: none"><li>• Non-combustible BS476 Part 4</li><li>• AS/NZ Standard 3837:1998 – Class Group 1</li><li>• AS Standard 1530.1-1994</li><li>• AS ISO 9239.1-2003 (supplementary standard BS-EN 13238-2001)</li></ul>
Fire protection	Up to 120 minutes (BS-EN 1364-1:1999)
Bending strength	14 N/mm <sup>2</sup>
Moisture content	9.5%
Surface alkalinity	pH 8-9 (approximately)
Colour	Light grey

**Safety**  
always comes first

# Two-hour fire rating test complies with BS-EN 1364-1:1999

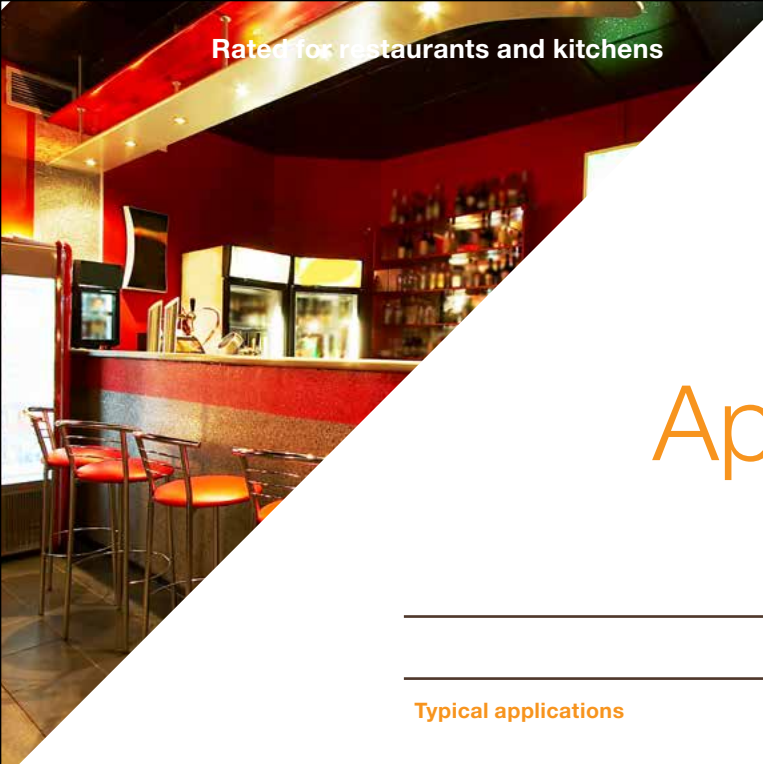


## Simple to install

1. Fix panel to frame with stainless steel self-tapping screws at minimum 200mm centres
2. Position screws at least 10mm from panel edge and 50mm from corner
3. All screw holes must be pre-drilled
4. Steel stud maximum centres – 600mm

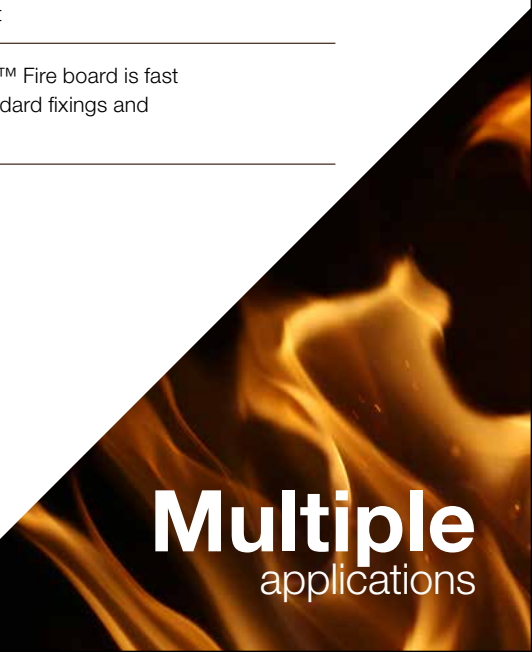
**Flexible**  
and convenient





# Applications and benefits

PalmEco™ Fire	
Typical applications	<ul style="list-style-type: none"><li>• Timber and steel frame partitions</li><li>• Single skin solid wall</li><li>• Underlay for stronger fire protection for timber and mezzanine floors</li><li>• Walls, ceiling linings and suspended ceilings needing strong fire protection</li><li>• Ducting and structural steelwork casings</li><li>• Construction and upgrading of timber or paneled doors</li><li>• Fascias, eaves, soffits and linings</li><li>• Fire protection for thatched roofs</li><li>• Fire-rated door construction</li><li>• Service enclosures</li></ul>
Durability	Fully external/internal
Fire protection	No fire ignition, no spread of fire, emits no toxic gas emissions during a fire
Moist resistant	Rot proof and strong moisture resistance
Insects and fungus resistant	Strongly resistant to termites and mould
Environment	Eco friendly, no harmful gas emissions Green label product
Decoration	Can be decorated with wallpaper and painted to finish without priming
Cost effective	Highly durable and efficient
Installation	Dry installation of PalmEco™ Fire board is fast and convenient, using standard fixings and metalwork



**Multiple**  
applications

# Easy to work with



## Cutting and sawing

Use a fine toothed saw. For shaped cuts use a pad, key hole or coping saw. Work smooth face up and support the board throughout. A power saw can be used with a tungsten carbide tipped blade. Always use dust extraction and wear suitable PPE.



## Nailing

When nailing without pre-drilling, position not less than 12mm from board edge. Galvanised wire nails are recommended. Do not use lost head nails or panel nails in wet areas. Boards can also be stapled.



## Drilling

Use a high speed power drill (not hammer type), bits should have HSS tips. When drilling, always support the back of the board to prevent break out.



## Screwing

When screwing, do not countersink 6mm boards. Pre-drilling is not always necessary. Use self-drilling/self-tapping screws. Screws should be located a minimum of 12 mm from board edges and 50 mm from board corners. Ribbed head screws are best for achieving a good countersink. Screws should be corrosion resistant.



## Fixing

Boards should be supported at maximum 600mm centres and fixed to supports using appropriate fixings at nominal 200 mm centres.



## Planing and sanding

The edges of the boards can be planed or smoothed with a surform, rasp or file. Use conventional glass paper for sanding.



## Painting

PalmEco™ Fire board can be decorated using conventional paints. Alkali resistant primers are not required. Water and oil based paints can be applied in accordance with paint manufacturer's instructions.



## Papering

When papering PalmEco™ Fire board, size the surface to seal against suction and improve slip, then hang paper or vinyl in the normal way.



## Plastering


PalmEco™ Fire board's smooth face finish requires minimal finishing. If flushing jointing is required, use fibre mesh joint tape and standard jointing compounds. Use a wide joint skim to minimise the appearance of lines if decorated. Follow jointing compound manufacturer's recommendations at all times.




## Tiling

PalmEco™ Fire board should not be used as tile backer board. However, it can be tiled for "splash backs" where the maximum "splash back" area is 600mm wide X 300 mm high. In these areas the supports must be reduced to 300mm centres. It is recommended that PalmEco™ Aqua board be considered for stronger moisture resistance.

**Flexible**  
and convenient



Safe for the little ones



Perfect for any public area

# Ideal for high traffic environments that need strong fire protection

PalmEco™ Fire board is easy to work, easy to install and easy to decorate. It's great for a wide range of building applications.

- Shopping centres
- Schools
- Clubs
- Restaurants
- Cinema
- Hospitals



**Green**  
and friendly



# Handling and storage

- Carry boards on edge and do not drop on their corners.
- Store boards under cover on a flat base clear of the ground. If stored on racks, boards should be fully supported across their width at not more than 1m centre.
- Always lift boards off the board below. Never slide board on board or drag the stack as this could mark the surface of the lower board.
- Store boards under cover for protection against inclement weather on a covered dry level ground away from the working area of mechanical plant.
- Boards should be stacked a maximum of 800mm high on firm level ground. If two or more pallets are stacked, the total stack height must be not more than 3500mm

# Health and safety

The board is not classified as a dangerous substance and so no special provisions are required regarding the carriage and disposal of the product in a landfill. Waste can be placed in an on-site skip with other general building materials, which should be disposed of by a registered contractor and in accordance to local regulations.



**Health**  
and safety



# For more information on our product range



## PalmEco™ Master

Multipurpose, great value



## PalmEco™ Fire

Greater fire resistance



## PalmEco™ Aqua

Higher water resistance



## PalmEco™ Box

Ideal for cabinetmakers



### PalmEco Tech Limited

Office C, 12th Floor, Hollywood Centre,  
77-91 Queen's Road West  
Hong Kong

T+852 26909866 | F+852 2690 3110

[www.PalmEcotech.com](http://www.PalmEcotech.com)

#### Disclaimer

Every care is taken to ensure accuracy, this publication is a general guide and specific technical advice is recommended before proceeding with any transaction. PalmEco Tech Limited does not accept responsibility for any loss as a result of any company or person relying on material in this publication, or for any mistakes or misprints.